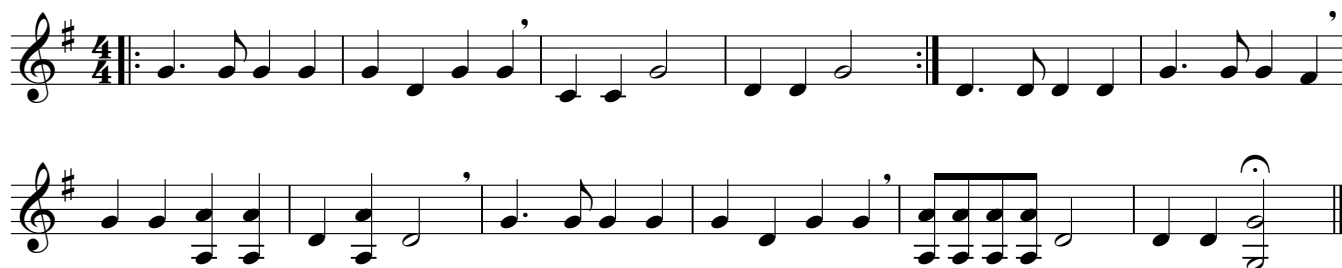


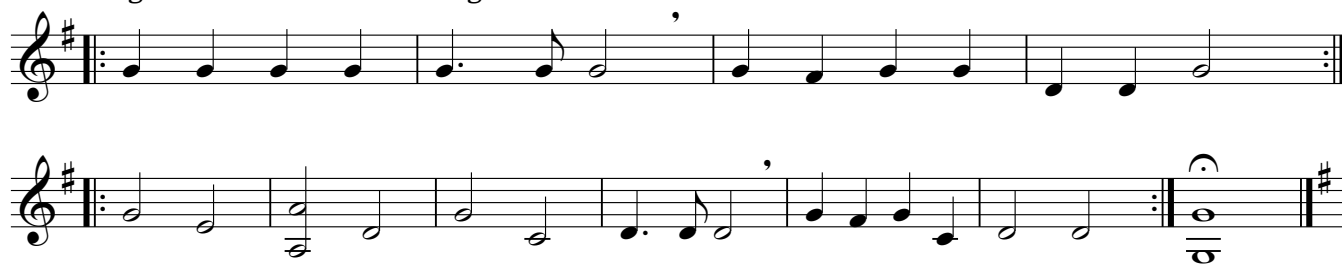
E♭ Tuba

RWPSBB Christmas

Deck the Halls



Angels we have heard on high



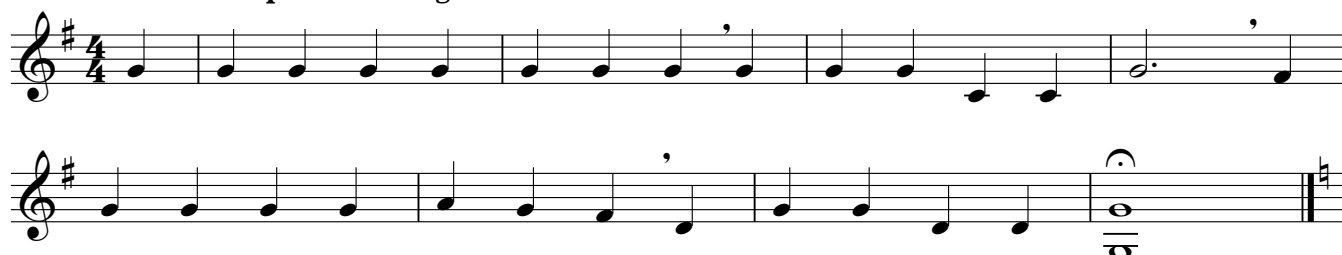
Joy to the World

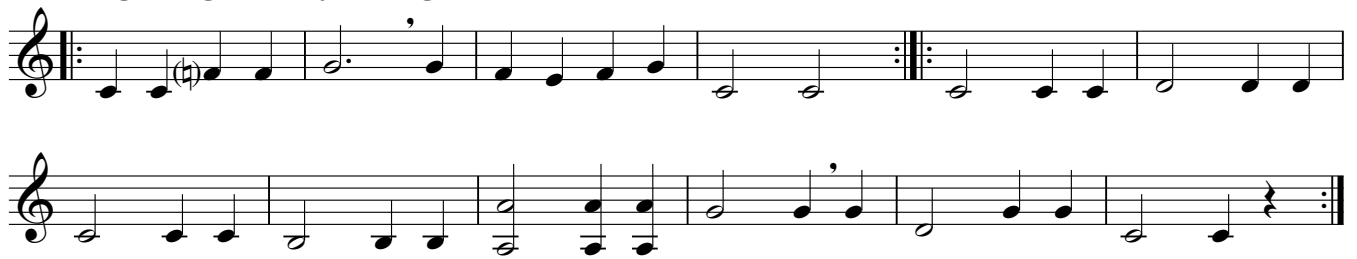


We wish you a Merry Christmas



It came upon a midnight clear



Ding Dong Merrily on High**Little Drummer Boy****Silent Night****Come all ye faithful**

Winter Wonderland

E♭ Tuba

3

Winter Wonderland

1. 2. Fine

D.S. al Fine

The musical score for the E♭ Tuba part of 'Winter Wonderland' consists of three staves. The first staff begins with a treble clef, a key signature of one sharp (F#), and a common time signature (C). It starts with a repeat sign followed by a measure rest, then continues with a series of eighth and quarter notes. The second staff features a first ending bracket over four measures, followed by a second ending bracket over four measures labeled 'Fine'. The third staff continues the melody and concludes with a double bar line and the instruction 'D.S. al Fine'.

Santa Claus is coming to town

Santa Claus is coming to town

1. 2.

The musical score for the E♭ Tuba part of 'Santa Claus is coming to town' consists of five staves. The first staff begins with a treble clef, a key signature of one sharp (F#), and a common time signature (C). It starts with a repeat sign followed by a measure rest, then continues with a series of eighth and quarter notes. The second staff features a first ending bracket over four measures, followed by a second ending bracket over four measures. The subsequent three staves continue the melody with various note values and rests, ending with a double bar line.

Rudolph the Red Nosed Reindeer

Rudolph the Red Nosed Reindeer

1. 2.

The musical score for the E♭ Tuba part of 'Rudolph the Red Nosed Reindeer' consists of five staves. The first staff begins with a treble clef, a key signature of one sharp (F#), and a common time signature (C). It starts with a repeat sign followed by a measure rest, then continues with a series of eighth and quarter notes. The second staff features a first ending bracket over four measures, followed by a second ending bracket over four measures. The subsequent three staves continue the melody with various note values and rests, ending with a double bar line.

Jingle Bells

Four staves of music for the E♭ Tuba part of 'Jingle Bells'. The first three staves contain the main melody with various rests and repeat signs. The fourth staff includes a first ending (1.) and a second ending (2.) leading to a key signature change to one sharp (F#).

White Christmas

Five staves of music for the E♭ Tuba part of 'White Christmas'. The music is in the key of one sharp (F#). The first four staves contain the main melody with various rests and repeat signs. The fifth staff includes a first ending (1.) and a second ending (2.) leading to a key signature change to one sharp (F#).

O Christmas Tree

Three staves of music for the E♭ Tuba part of 'O Christmas Tree'. The music is in 3/4 time. The first two staves contain the main melody with various rests and repeat signs. The third staff includes a first ending (1.) and a second ending (2.) leading to a key signature change to one sharp (F#).