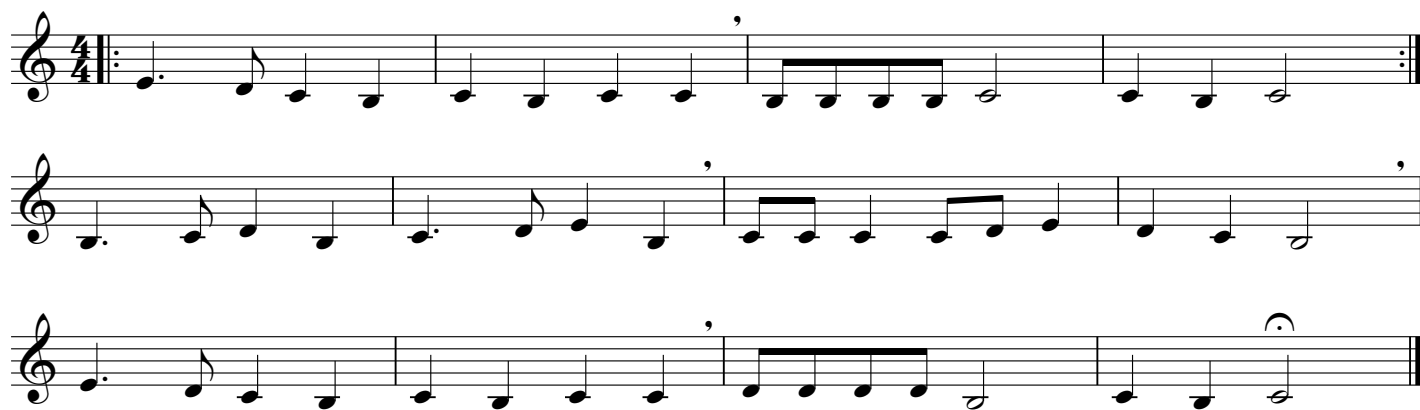
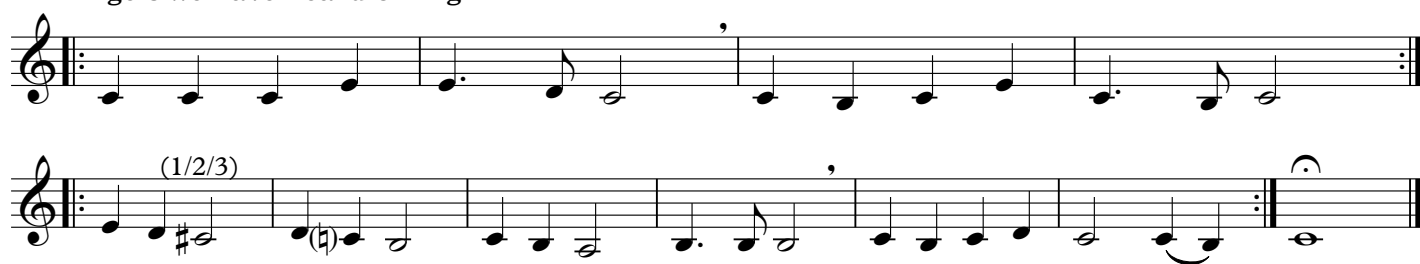


## Deck the Halls



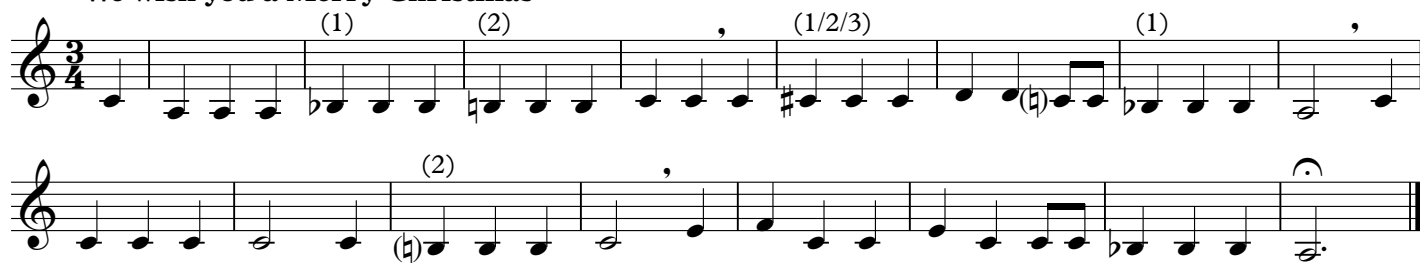
## Angels we have heard on high



## Joy to the World

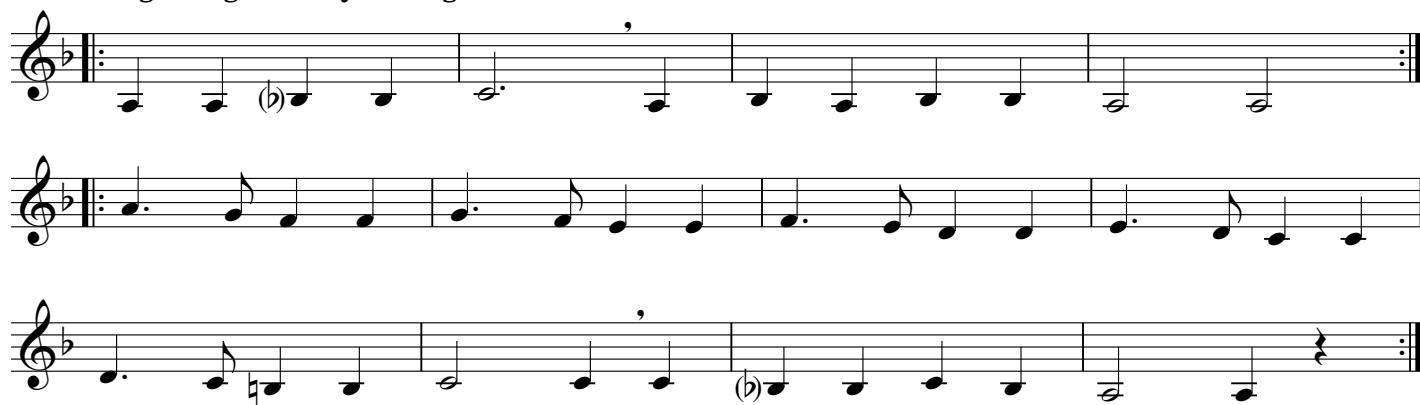


## We wish you a Merry Christmas



## It came upon a midnight clear



**Ding Dong Merrily on High****Little Drummer Boy****Silent Night****Come all ye faithful**

**Winter Wonderland**

8

Musical score for 'Winter Wonderland' in treble clef. The piece begins with a repeat sign and a first ending bracket. The second ending is marked 'Fine'. The score includes a double bar line, a key signature change to one sharp (F#), and a 'D.S. al Fine' instruction with first and second endings. The piece concludes with a final double bar line.

**Santa Claus is coming to town**

Musical score for 'Santa Claus is coming to town' in treble clef. The piece starts with a repeat sign and a first ending bracket. The second ending is marked 'Fine'. The score includes a double bar line, a key signature change to one sharp (F#), and a 'D.S. al Fine' instruction with first and second endings. The piece concludes with a final double bar line.

**Rudolph the Red Nosed Reindeer**

Musical score for 'Rudolph the Red Nosed Reindeer' in treble clef. The piece begins with a repeat sign and a first ending bracket. The second ending is marked 'Fine'. The score includes a double bar line, a key signature change to one sharp (F#), and a 'D.S. al Fine' instruction with first and second endings. The piece concludes with a final double bar line.

**Jingle Bells**

Four staves of music for "Jingle Bells". The first three staves are in B-flat major (one flat). The fourth staff includes a first ending bracket and a second ending bracket. The piece concludes with a double bar line and a key signature change to C major (no sharps or flats).

**White Christmas**

Four staves of music for "White Christmas". The first staff includes a rehearsal mark (123). The piece concludes with a double bar line and a key signature change to C major (no sharps or flats).

**O Christmas Tree**

Three staves of music for "O Christmas Tree". The piece is in 3/4 time and concludes with a double bar line and a key signature change to C major (no sharps or flats).